



TUBEX[®]
Advancing growth



TUBEX NATURE Biodegradable Tree Shelters

Rooted in Science, Derived from Nature.



tubex.com

Rooted in Science, Derived from Nature

Tubex Nature is the first tree shelter to combine externally tested biodegradability in soil with scale of manufacture and proven performance.

Ideal for areas with dense woodland or limited access, Tubex Nature is the most responsible alternative where collection and recycling is not practical.



What is **Tubex Nature** made from?

Manufactured using a bio-based blend, including sugarcane, corn and starch. Tubex Nature can be left to biodegrade in situ and will, over time, start to degrade, breaking down into water and CO₂ through a microbiological process.

Note: Tubex Nature will biodegrade in situ, but this process can be accelerated by mulching and burying used shelters at their end of life.



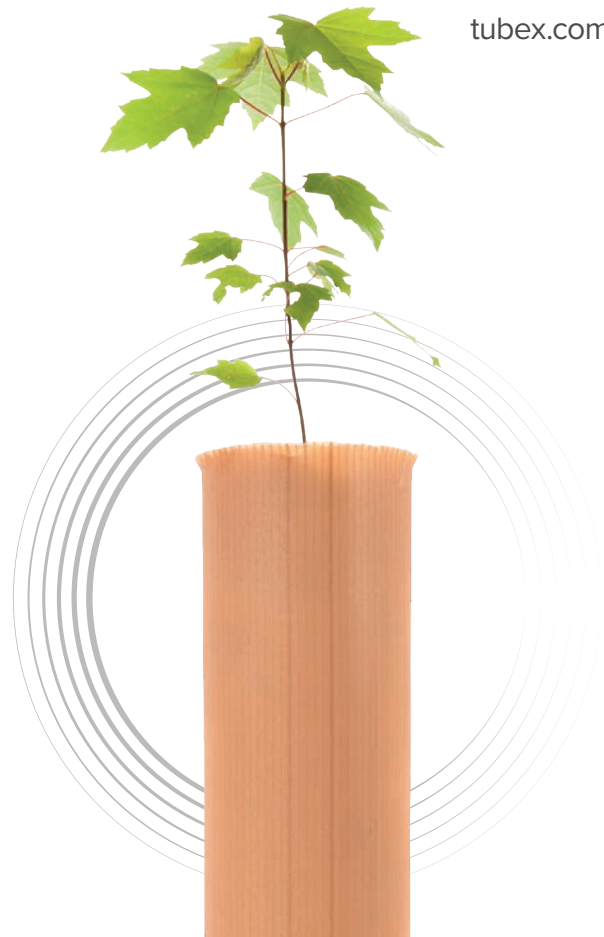
**DERIVED
FROM
NATURE**

Product Benefits

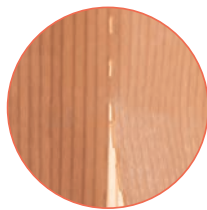
Protective, responsible & scalable.

The latest addition to the Tubex range is designed to perform, providing the same high levels of browsing protection and growth facilitation expected from Tubex products.

- **Biodegradable in situ:** Externally tested against ISO 17556 to show soil biodegradability
- **Bio-Based:** Material derived from sugarcane, corn & starch
- **Non-Toxic:** Externally tested against OECD 207 & 208
- **Proven Performance:** A robust twin-walled construction has been tested to perform with an expected 5-year service life whilst providing excellent light transmission to facilitate growth
- **Easy Installation:** Includes pre-fitted re-release ties



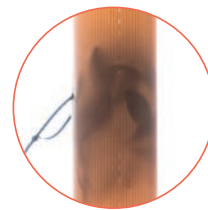
Twin walled construction minimises weight while maximising strength



Tubex laserline allows the tree to break free



Flared rim minimises stem abrasion



Excellent light transmission accelerates growth by creating a microclimate

Product Range

Product style	Height (m)	Width (mm)	Colour	Material
Nature Standard	0.6, 1.2	73 - 105	Light brown	Bio-based blend
Nature Vortex	1.2	80 - 120		
Nature Easywrap	0.6	50 - 60		
Nature Shrubshelter	0.6	130 - 160		
Nature Voleguard	0.2	38		

Installation

As a result of Tubex extreme weather testing on Tubex Nature, for superior performance we recommend installing the tube facing the prevailing wind, so that the wind pushes the tube into the stake.

Our sustainability strategy

At Tubex, we have been pioneering tree shelter solutions since the 1980s, giving saplings the best chances at growth.

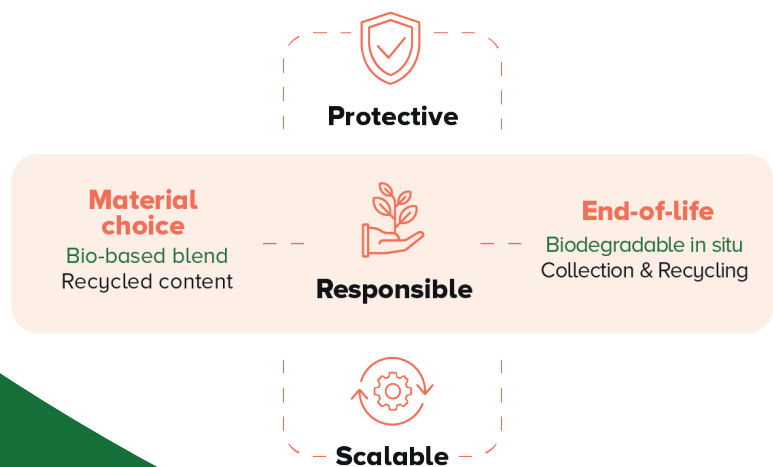
We are committed to promoting the move towards a circular economy, with a **range of sustainable solutions** that customers can choose from for their particular needs.

Yet all solutions must follow our three key principles - **protective, scalable and responsible**.

Our range of **recyclable tree shelters** are the lowest environmental impact solution on the market. We are moving towards a fully circular solution, through the use of recycled polymer and 'end of life' collection & recycling through our "Tubex Collection & Recycling Programme".

Tubex Nature Biodegradable Shelters join our suite of solutions to provide a responsible alternative where collection and recycling is not practical.

Tubex's Key Principles



Find out more about our sustainability strategy at:
tubex.com/sustainability



+44 (0) 1685 888 020



tubex.com



sales@tubex.com



[/tubex](https://www.linkedin.com/company/tubex)

A brand of

